

The following instructions are designed to be used for the installation of LJ-4075 Box Newels. These instructions assume the location of each box newel has already been marked on the stairway and balcony.

IMPORTANT: Please read instructions thoroughly before beginning. For final installation, always use an approved adhesive at every assembly joint.

This is an assembled product made up of components that have been kiln-dried to a low moisture content. Extreme variances in temperature and humidity will cause kiln dried and assembled wood products to shrink and/or swell. Caution should be taken to prevent these variances by avoiding exposure to very moist environments such as rain or wet drywall. For obvious reasons, one should never use a treated post attached to or anywhere near a kiln-dried product. L.J. Smith bears no responsibility for product failure when exposure to variances in moisture content has been proven to have occurred.

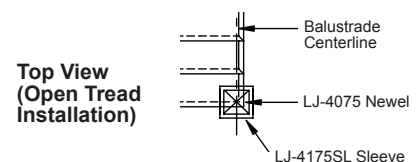
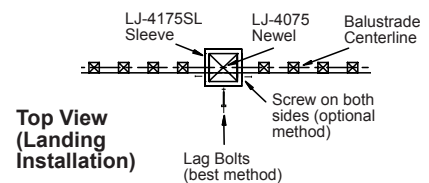
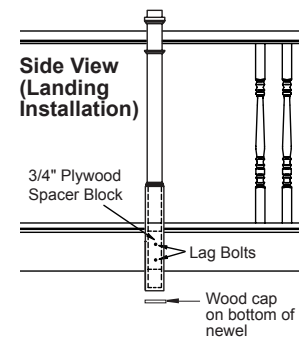
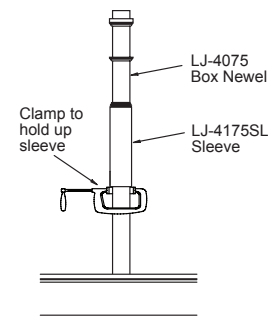
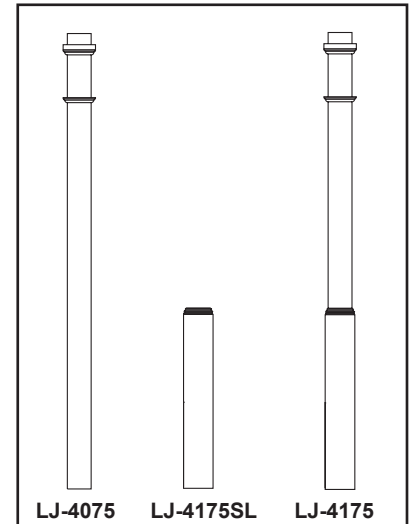
Installation Without the Sleeve

L.J. Smith LJ-4075 box newels are constructed in a manner that allows many of the L.J. Smith newel mounting kits to be used for installation. Select the appropriate kit for the application.

Installation With the Sleeve on Open Tread Stairway or Balcony

1. Trim the bottom of the newel and/or sleeve to the proper length. If necessary, cut and notch the newel and/or sleeve over the edge of the tread/riser or over the edge of the balcony. (For further information on newel notching, see step 107-A in the L.J. Smith Balustrade Installation Guide LJ-0694 INST).
2. Slide the LJ-4175SL sleeve up onto the bottom of the box newel and clamp it out of the way.
3. Securely mount the newel post using the chosen method.
4. Release the sleeve and let it slide all the way down to the mounting surface. If the chosen hardware is not fully concealed, trim the base of the sleeve with shoe moulding or a moulding matched to the other trim in the home.
5. If a portion of the newel and/or sleeve is notched over the edge of the tread/riser or over the edge of the balcony, secure the newel and/or sleeve by using lag bolts installed through the face of the newel. Screws may also be installed through the sides into the face of the balcony. Plug and sand the holes.

To conceal any end grain, apply a wood cap over the bottom of the newel that protrudes past the face of the balcony or intermediate landing.



Installation With the Sleeve on Kneewall Stairway

1. Trim the bottom of the newel to the proper length. If necessary, trim the sleeve to the desired length.
2. Slide the LJ-4175SL sleeve onto the bottom of the box newel. Mark and drill two 1" diameter holes through the front panel of the sleeve and into the newel face to a depth of approximately 1/4".
3. In the center of each 1" hole, drill a 3/8" diameter hole completely through the box newel and sleeve back panel.
4. Mark and drill the appropriate pilot hole for a 5/16" x 5 1/2" lag bolt in the end of the kneewall to correspond with the holes previously drilled through the newel and sleeve.
5. Position the newel with sleeve against the kneewall end. Attach with 5 1/2" lag bolts. Use glue or construction adhesive on the final assembly.
6. Install 1" plugs and sand.

